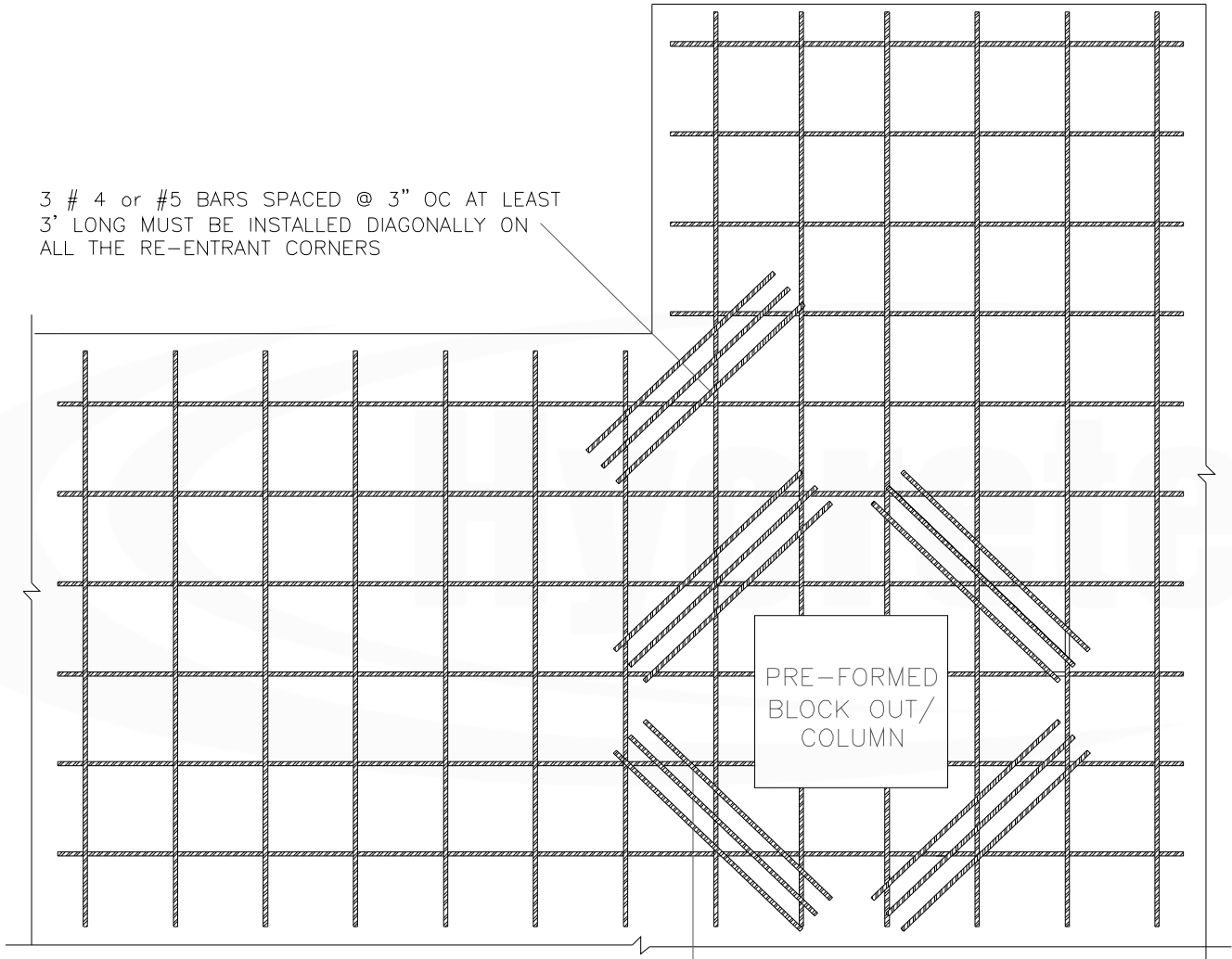



3 # 4 or #5 BARS SPACED @ 3" OC AT LEAST
3' LONG MUST BE INSTALLED DIAGONALLY ON
ALL THE RE-ENTRANT CORNERS



3 # 4 OR #5 DIAGONAL BARS SPACED
@ 3" OC

Hycrete details illustrate generic construction guidelines. They are intended for use by design/construction professionals, to assist in developing project-specific details. These should be modified where necessary to accommodate individual project conditions. The user maintains all responsibility for verifying the applicability and suitability of the technical service or information provided. Contact a Hycrete technical professional for assistance in project-specific requirements. Always refer to project specifications and local building codes for any special requirements.
© 2009 Hycrete, Inc. All rights reserved. The right to utilize Hycrete details for commercial purposes is granted exclusively to contractors, architects, quantity surveyors, engineers, waterproofing consultants, and specification writers. Hycrete™ is a registered trademark of Hycrete, Inc.

LOCATION: ALL APPLICATIONS		DETAIL TYPE: SLAB OR WALL	
POUR TYPE: CIP OR SHOTCRETE		APPLICATIONS: ALL APPROVED APPLICATIONS	
 Delivering Concrete Solutions		DRAWING TITLE: RE-ENTRANT CORNER DETAIL	
		SEP 2009	DRAWING NUMBER: 7101001
462 BARELL AVENUE CARLSTADT NJ 07072 USA +1 (201) 586 8110 WWW.HYCRETE.COM		DRWN BY: FAZAL	CHKD BY: NHM
			NTS