



Delivering Concrete Solutions

DATA SHEET

Hycrete System W | For technical assistance contact your local Hycrete Representative or call (201) 386-8110

For Waterproof Construction, Membrane-Free



PRODUCT FEATURES

- Water-Tight Construction
- Performance Warranty
- Accelerated Construction & Reduced Delays
- Reduced Costs
- Enhanced Durability
- Simplified Process & Improved Safety
- Sustainable Construction

RECOMMENDED APPLICATIONS*

- Parking Garages
- Podiums and Plaza Decks
- LEED Projects
- Commercial Sub-Grade Walls & Slabs
- Retaining Walls
- Water Tanks
- Water Treatment Facilities
- Tunnels

* Please contact a Hycrete, Inc. representative for suitability of your application.

PRODUCT DESCRIPTION

The Hycrete System W is a multi-pronged approach to concrete construction that eliminates the need for membranes. At the core is Hycrete’s patented revolutionary admixture technology, a chemistry that transforms the porous, hard sponge of ordinary concrete into hydrophobic concrete. From start to finish, Hycrete’s world-class field service team is involved, providing guidance on construction details, mix designs, and Hycrete admixtures. They then ensure that all onsite steps are completed so that a waterproof structure is delivered. Then – when a dry structure is delivered – Hycrete backs it all up with the best-in-class IntegraTek™ warranty.

THE SYSTEM APPROACH TO WATERPROOF CONSTRUCTION

1. WATERPROOF CONCRETE

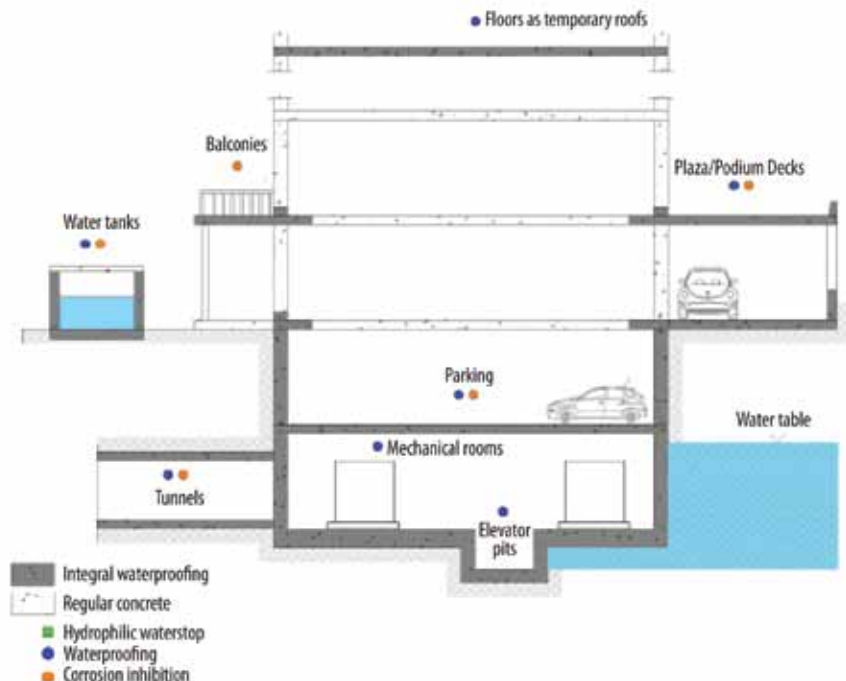
An environmentally friendly, water-soluble Cradle to Cradle™ certified product, **Hycrete W1000** transforms into a water-insoluble polymer when mixed into concrete. That polymer works on the molecular level to block pores that are penetrable by damaging water and corrosive salts. It also bonds to the surface of steel reinforcement within concrete, creating a protective layer that wards off corrosion. The result is hydrophobic, waterproof concrete.

2. WORLD-CLASS TECHNICAL FIELD SERVICE

Hycrete’s **field service team** makes the difference between waterproof concrete and waterproof construction. This level of service is unique to Hycrete. No claim to a waterproof structure would be complete without it.

3. BEST-IN-CLASS, 10-YEAR WARRANTY

The Hycrete **IntegraTek™ warranty** was written to be the best available. Since the Hycrete System W approach simplifies waterproofing so dramatically, you have only one person to call; the finger-pointing of traditional waterproofing is eliminated.

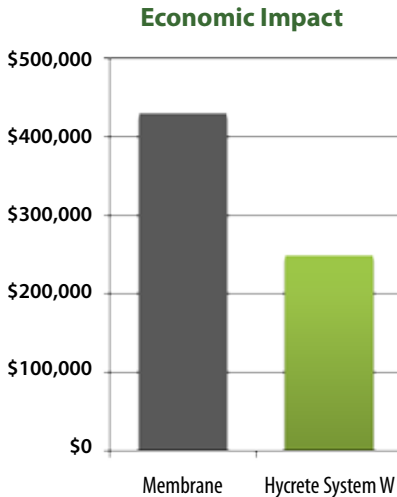


A GREENER BUILDING



The Cradle to Cradle™ concept is at the core of Hycrete's solutions. This approach models human industry on nature's processes in which materials are viewed as nutrients circulating in healthy, safe metabolisms. Put simply, it is a holistic economic, industrial and social framework that seeks to create systems that are not just efficient but essentially waste free. In Hycrete's case, this means using environmentally safe and healthy materials, designing for material reutilization, using renewable energy and energy efficiency in manufacturing and the efficient use of water in manufacturing.

A LOWER COST AND FASTER APPROACH

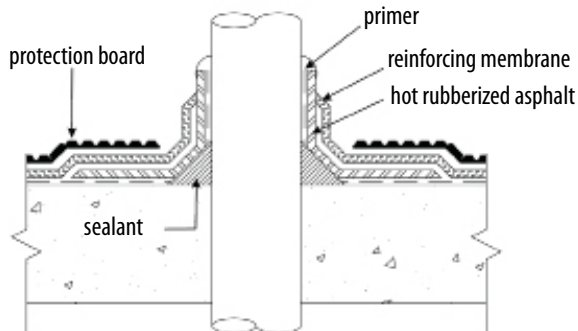
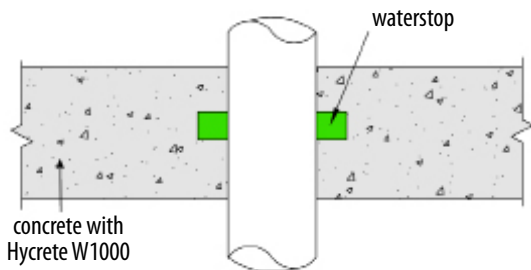
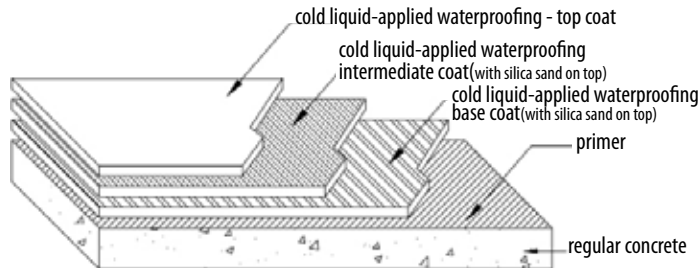
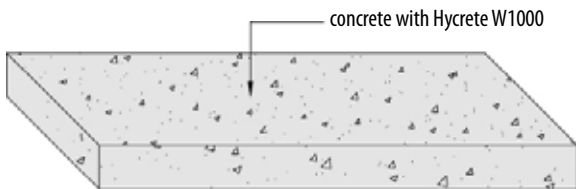


A BETTER SOLUTION

Hycrete System W

VS

Membrane System



HYCRETE, INC. | 462 BARELL AVENUE | CARLSTADT, NJ 07072 USA | PHONE: (+1) 201.386.8110 | FAX: (+1) 201.386.8155 | WWW.HYCRETE.COM

Copyright © 2011 Hycrete, Inc. All rights reserved. Hycrete, Inc. and the Hycrete logo are trademarks of Hycrete, Inc.

Disclaimer: The information and recommendations relating to the application and end-use of Hycrete Products are based on data that Hycrete, Inc. considers to be true and accurate and is to be used for the users' consideration, examination, and confirmation, but Hycrete, Inc. does not warrant the results acquired. Materials, compositions, and site environments are varied and no warranty can be implied from this information or from any written recommendations, or from any other offered guidance. All orders are accepted subject to Hycrete, Inc's terms of sale and delivery. Copies of the most recent version of the Product Data Sheet should always be referenced and are available upon request. See warranty sheet for warranty details (available upon request). Protected under one or more of the following U.S. patents: 7,261,923; 7,381,252; 7,407,535; 7,498,090; 7,513,948 and 7,670,415. Additional patents pending and/or issued in the U.S. and internationally.